



GTF II™ Stem

Femoral Hip System

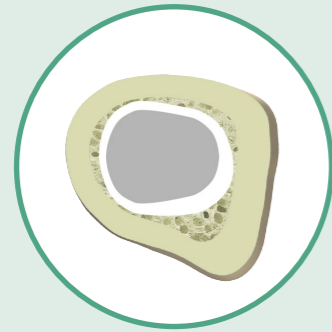


GTF II Stem –

The GTF II stem is a cemented stem indicated for patients with femoral head, neck and intertrochanteric fractures, and severe proximal bone loss. Its adoption of a cement friendly trapezoidal cross-sectional geometric design facilitates the reduction of bone-cement interface stresses to help avoid cement failure.

The GTF II stem allows for two resection levels, and offers two options of stem diameter and stem length to account for differing bone conditions.





Cutouts and Open Through-hole

- Designed for additional wire fixation options

Trapezoidal Cross-section

- Designed to reduce stress on the cement mantle

Distal Centralizer

- Equalizes cement mantle and ensures correct stem alignment



Cement Restrictor

- Prevent cement leakage

Tapered Distal Tip

- Designed to avoid cement failure

12/14 Neck Taper

- Accommodate a complete selection of femoral heads



45 mm Resection Level



55 mm Resection Level

Multiple Sizing Options

- 2 stem lengths (130 mm and 160 mm)
- 2 stem diameters (Ø9 mm and Ø11 mm)
- 2 resection levels (45 mm and 55 mm)

Total 2 x 2 x 2 = 8 sizes

Order Information

Catalog Number **Description**

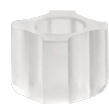
GTF II Stem



| | Distal Diameter | Resection Level | Medial Length |
|-------------|------------------------|------------------------|----------------------|
| 1108 - 3041 | Ø 9 mm | 45 mm | 130 mm |
| 1108 - 3043 | Ø 9 mm | 45 mm | 160 mm |
| 1108 - 3051 | Ø 9 mm | 55 mm | 130 mm |
| 1108 - 3053 | Ø 9 mm | 55 mm | 160 mm |
| 1108 - 5041 | Ø 11 mm | 45 mm | 130 mm |
| 1108 - 5043 | Ø 11 mm | 45 mm | 160 mm |
| 1108 - 5051 | Ø 11 mm | 55 mm | 130 mm |
| 1108 - 5053 | Ø 11 mm | 55 mm | 160 mm |

Catalog Number **Description**

Centralizer

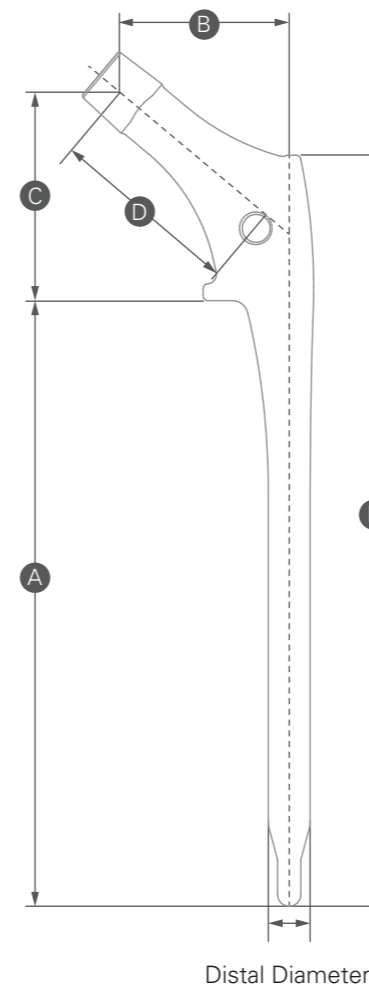


| | |
|-------------|---------|
| 1904 - 5010 | Ø 10 mm |
| 1904 - 5011 | Ø 11 mm |
| 1904 - 5012 | Ø 12 mm |
| 1904 - 5013 | Ø 13 mm |
| 1904 - 5014 | Ø 14 mm |

Cement Restrictor



| | ØA | ØB |
|-------------|-----------|-----------|
| 1905 - 7007 | 7 mm | 13 mm |
| 1905 - 7008 | 8 mm | 14 mm |
| 1905 - 7009 | 9 mm | 15 mm |
| 1905 - 7010 | 10 mm | 16 mm |
| 1905 - 7011 | 11 mm | 17 mm |
| 1905 - 7012 | 12 mm | 18 mm |
| 1905 - 7013 | 13 mm | 19 mm |
| 1905 - 7014 | 14 mm | 20 mm |
| 1905 - 7015 | 15 mm | 21 mm |
| 1905 - 7016 | 16 mm | 22 mm |



| Distal Diameter | A Medial Length | B Offset | C Vertical Height | D Neck Length | E Lateral Length |
|------------------------|---------------------------|--------------------|-----------------------------|-------------------------|----------------------------|
| Ø 9 | 130 | 36 | 45 | 47 | 161 |
| Ø 9 | 160 | 36 | 45 | 47 | 191 |
| Ø 9 | 130 | 36 | 55 | 47 | 161 |
| Ø 9 | 160 | 36 | 55 | 47 | 191 |
| Ø 11 | 130 | 39 | 45 | 51 | 161 |
| Ø 11 | 160 | 39 | 45 | 51 | 191 |
| Ø 11 | 130 | 39 | 55 | 51 | 161 |
| Ø 11 | 160 | 39 | 55 | 51 | 191 |

Unit: mm

Please note that all United Orthopedic Corporation product brochures have been authored in the English language. Any translations into other languages have not been reviewed or approved by United Orthopedic Corporation and their accuracy cannot be confirmed. Any questions regarding United Orthopedic Corporation products should be directed to United Orthopedic Corporation at unitedorthopedic.com/contact.

The CE mark is valid only if it is also printed on the product label.



Importiert & vertrieben in der Schweiz durch
Importé & distribué en Suisse par
Importato e distribuito in Svizzera da

 **PLUSORTHO**
PROTHETIK

Aeschwahrstrasse 54 info.ch@plusortho.ch
CH-4665 Oftringen tel +41(0)62 788 2010
www.plusortho.ch fax +41(0)62 788 2011

