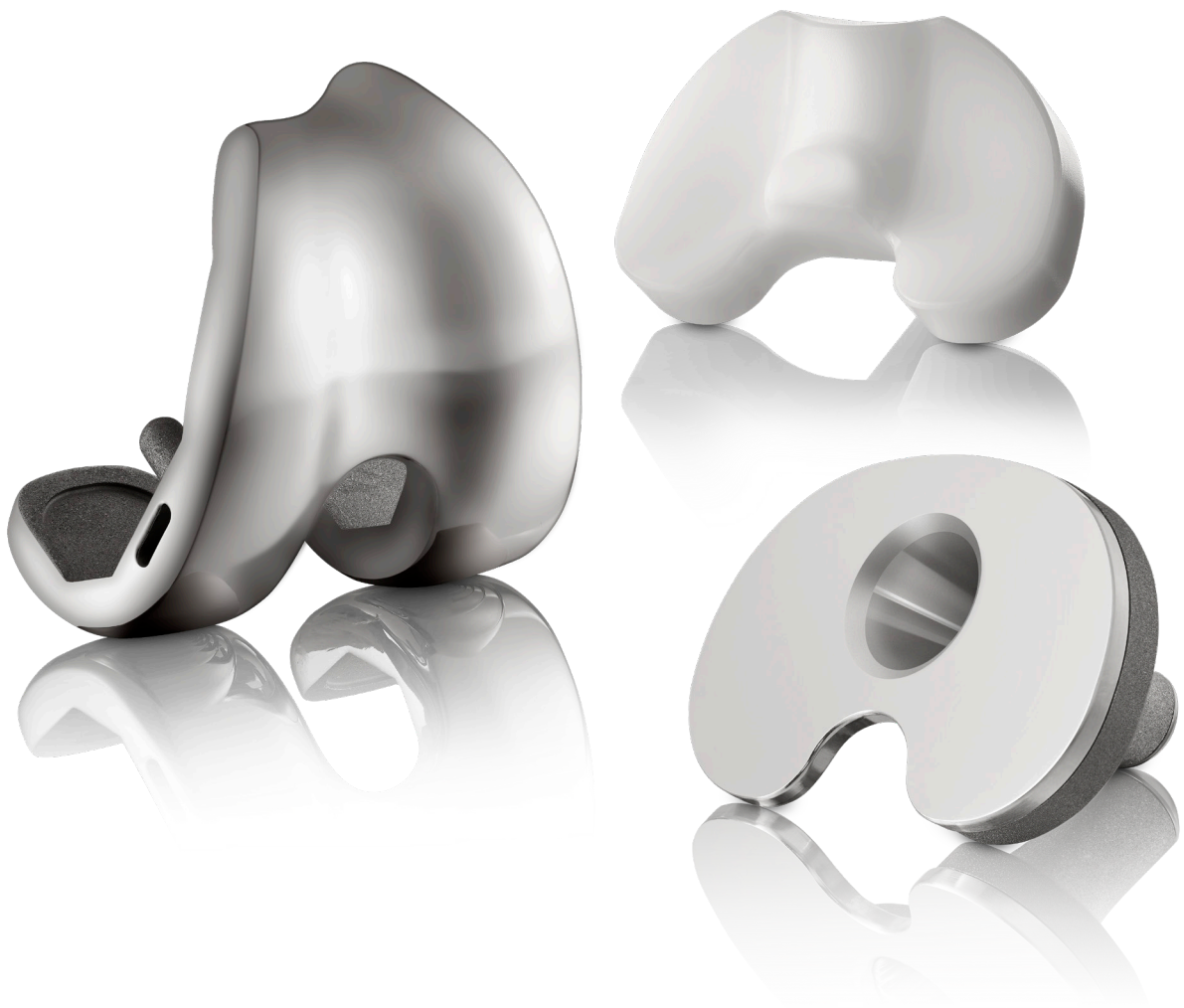


## U2 MB™ Knee

Mobile Bearing Total Knee System



### *U2 MB Knee –*

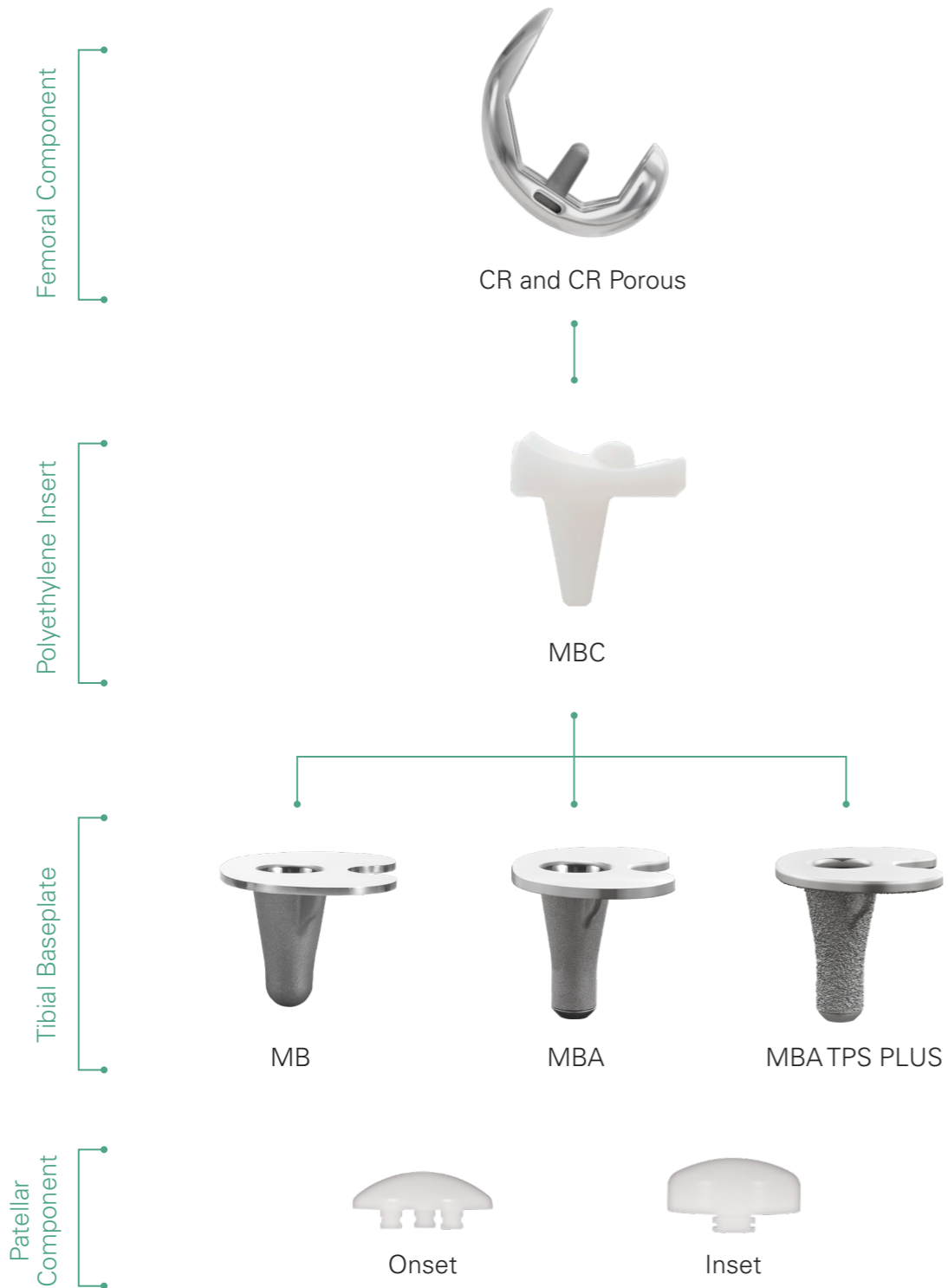
The Mobile Bearing rotating platform knee prosthesis provides both low contact pressure on the articular surface and low shear force on the bone-implant interface.

The U2 MB Knee is compatible with both U2 Posterior Stabilized (PS) and Cruciate Retaining (CR) femoral components.

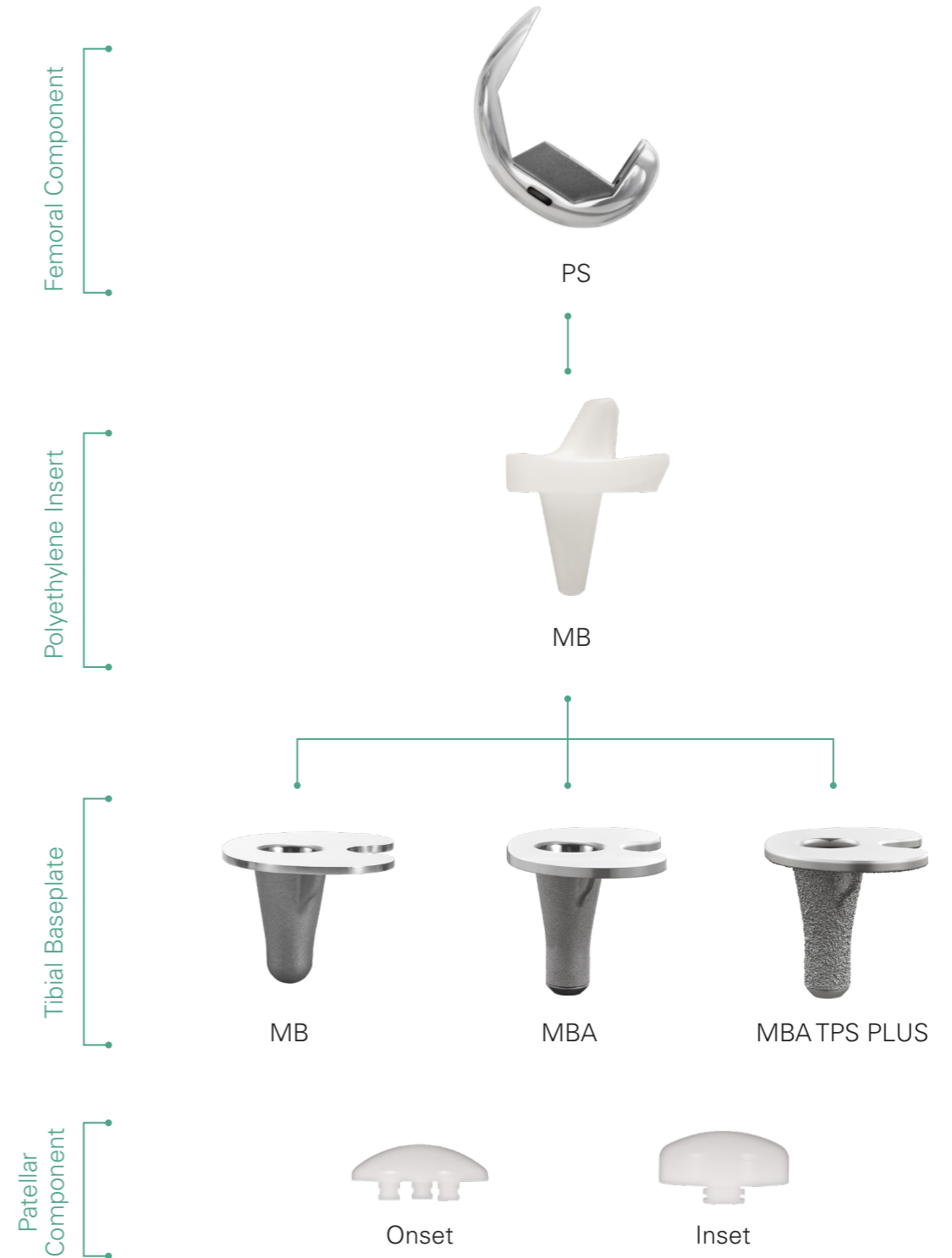


# U2 MB Knee System Overview

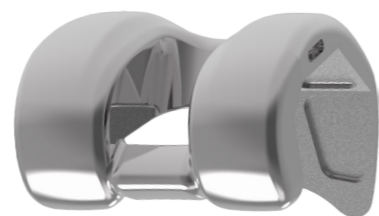
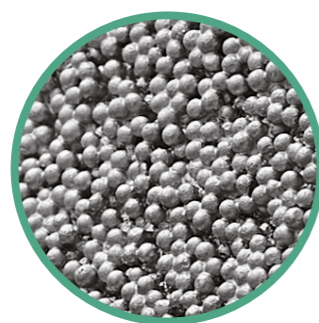
## Cruciate Retaining (CR)



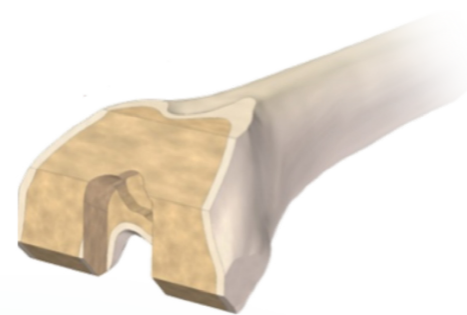
## Posterior Stabilized (PS)



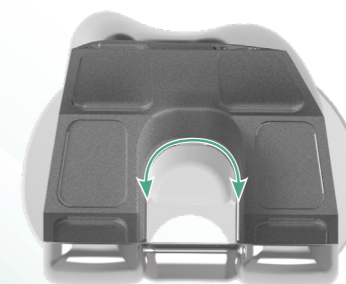
The PS (posterior stabilized) and CR (curciate retaining) femoral components have the same design features, including 2 mm A/P and M/L increments, extended patella groove, and consistent intercondylar width.



The extended patella groove is designed with increased contact area between the patella and femoral implants to allow for optimal patella tracking.

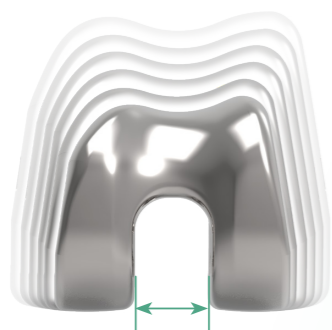


Smaller intercondylar bone removal together with rounded corners help avoid the risk of intercondylar fracture for PS box preparation.



The curved anterior insert post and PS femoral cam is designed to reduce potential for impingement, component failure and poly wear.

Two CR femoral component types are available  
- CR (Cemented type)  
- CR Porous (Sintered CoCr bead)



Consistent condylar curvature and standard intercondylar box width (in PS knee) allows full interchangeability between femoral and tibial components.



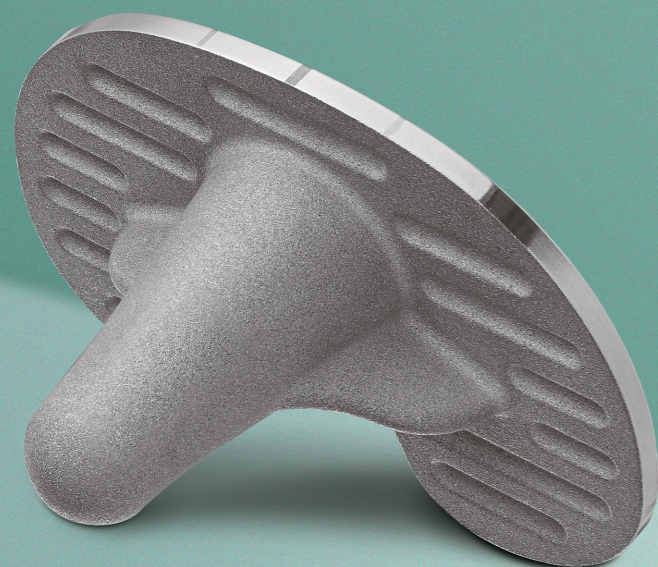
PS and CR femoral components are offered in 2 mm A/P and M/L increments to provide a comprehensive femoral sizing solution.



Within the mobile bearing design, cemented and TPS PLUS tibial baseplate options are available.

## Mobile Bearing (MB)

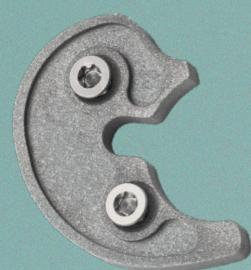
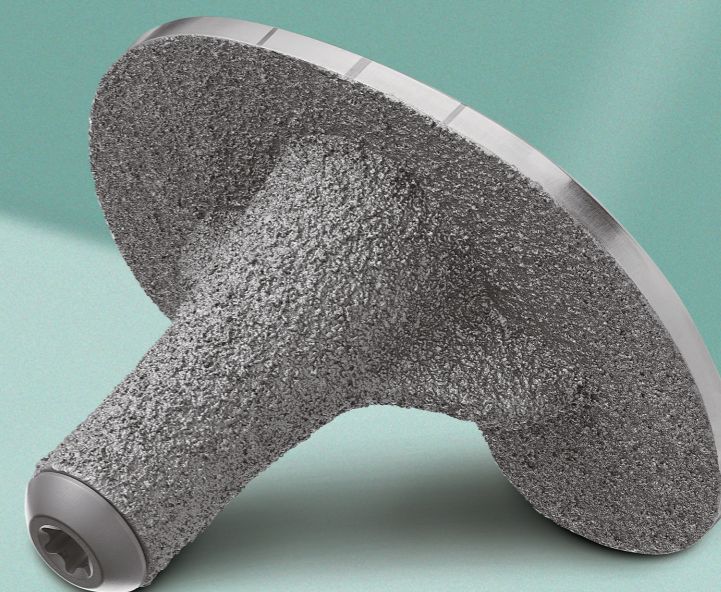
- Cemented tibial baseplate with rough surface and cement recess help promote optimal cement fixation



## Mobile Bearing Augmentable (MBA)



## Mobile Bearing Augmentable (MBA) TPS PLUS



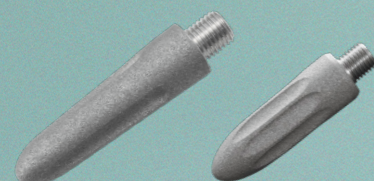
### Tibial Augment

- Size 1 through 6
- Thickness: 5 and 10 mm



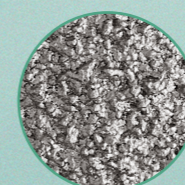
### Plug

- Distal end sealed with pre-assembled plug



### Tibial Extension Stem

- Diameter: 9 mm
- Length: 20, 45, 70 and 95 mm
- Diameter: 12.5 and 14 mm
- Length: 45 mm



- Titanium Plasma Spray PLUS coating designed to improve biological fixation



- Highly mirror-polished platform designed to reduce backside wear

# Enhanced Kinematics Using Rotational Freedom



## MBC, Mobile Bearing Congruent Insert

- For use with the U2 CR femoral component
- Surgery : PCL can be either retained or sacrificed
- Includes a central stopping mechanism designed to enhance Medial-Lateral (M-L) stability and also allows up to 4.5° hyper-extension

Material : ● UHMWPE ● XPE

CR Femoral Component		#1	#1.5	#2	#2.5	#3	#3.5	#4	#4.5	#5	#5.5	#6	#6.5
MBC Insert		#1	#2	#3	#4	#5	#6						
Mobile Bearing Baseplate	#1	●	●	—	—	—	—						
	#2	●	●	●	—	—	—						
	#3	●	●	●	●	—	—						
	#4	●	●	●	●	●	—						
	#5	●	●	●	●	●	●						
	#6	●	●	●	●	●	●	●					



## MB, Mobile Bearing Insert

- For use with the U2 PS femoral component
- Surgery : Both ACL and PCL sacrificed

Material : ● UHMWPE ● XPE

PS Femoral Component		Fully Interchangeable Between Femoral Component and Insert					
MB Insert		#1	#2	#3	#4	#5	#6
Mobile Bearing Baseplate	#1	●	●	—	—	—	—
	#2	●	●	●	—	—	—
	#3	●	●	●	●	—	—
	#4	●	●	●	●	●	—
	#5	●	●	●	●	●	●
	#6	●	●	●	●	●	●

# Order Information

Special Order Items

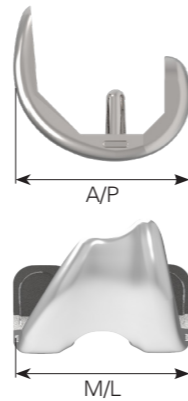
## Femoral Component



CR



PS



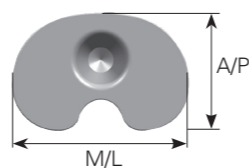
	Cemented		Porous	
	Left	Right	Left	Right
#1	2103-1310	2103-1410	2103-1110	2103-1210
#1.5	2103-1315	2103-1415	2103-1115	2103-1215
#2	2103-1320	2103-1420	2103-1120	2103-1220
#2.5	2103-1325	2103-1425	2103-1125	2103-1225
#3	2103-1330	2103-1430	2103-1130	2103-1230
#3.5	2103-1335	2103-1435	2103-1135	2103-1235
#4	2103-1340	2103-1440	2103-1140	2103-1240
#4.5	2103-1345	2103-1445	2103-1145	2103-1245
#5	2103-1350	2103-1450	2103-1150	2103-1250
#5.5	2103-1355	2103-1455	2103-1155	2103-1255
#6	2103-1360	2103-1460	2103-1160	2103-1260
#6.5	2103-1365	2103-1465	2103-1165	2103-1265

	Cemented	
	Left	Right
#1	2103-3110	2103-3210
#1.5	2103-3115	2103-3215
#2	2103-3120	2103-3220
#2.5	2103-3125	2103-3225
#3	2103-3130	2103-3230
#3.5	2103-3135	2103-3235
#4	2103-3140	2103-3240
#4.5	2103-3145	2103-3245
#5	2103-3150	2103-3250
#5.5	2103-3155	2103-3255
#6	2103-3160	2103-3260
#6.5	2103-3165	2103-3265

	A/P	M/L
#1	52	56
#1.5	54	58
#2	56	60
#2.5	58	62
#3	60	64
#3.5	62	66
#4	64	68
#4.5	66	70
#5	68	72
#5.5	70	74
#6	72	76
#6.5	74	78

Unit : mm

## Tibial Baseplate



	MB	MBA
#1	2203-7010	2203-7210
#2	2203-7020	2203-7220
#3	2203-7030	2203-7230
#4	2203-7040	2203-7240
#5	2203-7050	2203-7250
#6	2203-7060	2203-7260

	MBA TPS PLUS
#1	2203-7410
#2	2203-7420
#3	2203-7430
#4	2203-7440
#5	2203-7450
#6	2203-7460

	A/P	M/L
#1	42	63
#2	44.5	66
#3	47	69
#4	49.5	72
#5	52.5	76
#6	55.5	80

Unit : mm

# Order Information

Special Order Items

## Tibial Insert



MBC Insert

	UHMWPE				
	9 mm	11 mm	13 mm	15 mm	18 mm
#1	2303-7211	2303-7212	2303-7213	2303-7214	2303-7215
#2	2303-7221	2303-7222	2303-7223	2303-7224	2303-7225
#3	2303-7231	2303-7232	2303-7233	2303-7234	2303-7235
#4	2303-7241	2303-7242	2303-7243	2303-7244	2303-7245
#5	2303-7251	2303-7252	2303-7253	2303-7254	2303-7255
#6	2303-7261	2303-7262	2303-7263	2303-7264	2303-7265

	XPE				
	9 mm	11 mm	13 mm	15 mm	18 mm
#1	2303-7611	2303-7612	2303-7613	2303-7614	2303-7615
#2	2303-7621	2303-7622	2303-7623	2303-7624	2303-7625
#3	2303-7631	2303-7632	2303-7633	2303-7634	2303-7635
#4	2303-7641	2303-7642	2303-7643	2303-7644	2303-7645
#5	2303-7651	2303-7652	2303-7653	2303-7654	2303-7655
#6	2303-7661	2303-7662	2303-7663	2303-7664	2303-7665



MB Insert

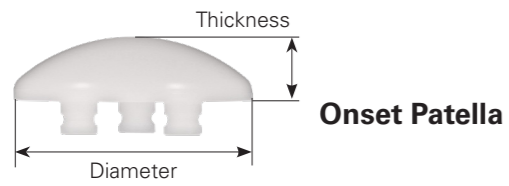
	UHMWPE				
	9 mm	11 mm	13 mm	15 mm	18 mm
#1	2303-7011	2303-7012	2303-7013	2303-7014	2303-7015
#2	2303-7021	2303-7022	2303-7023	2303-7024	2303-7025
#3	2303-7031	2303-7032	2303-7033	2303-7034	2303-7035
#4	2303-7041	2303-7042	2303-7043	2303-7044	2303-7045
#5	2303-7051	2303-7052	2303-7053	2303-7054	2303-7055
#6	2303-7061	2303-7062	2303-7063	2303-7064	2303-7065

	XPE				
	9 mm	11 mm	13 mm	15 mm	18 mm
#1	2303-7511	2303-7512	2303-7513	2303-7514	2303-7515
#2	2303-7521	2303-7522	2303-7523	2303-7524	2303-7525
#3	2303-7531	2303-7532	2303-7533	2303-7534	2303-7535
#4	2303-7541	2303-7542	2303-7543	2303-7544	2303-7545
#5	2303-7551	2303-7552	2303-7553	2303-7554	2303-7555
#6	2303-7561	2303-7562	2303-7563	2303-7564	2303-7565

# Order Information

Special Order Items

## Patellar Component

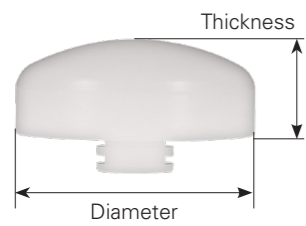


**Onset Patella**

	XS	S	M	L	XL	XXL	EL
<b>UHMWPE</b>	2403-1010	2403-1020	2403-1030	2403-1040	2403-1050	2403-1060	2403-1070
<b>XPE</b>	2403-3210	2403-3220	2403-3230	2403-3240	2403-3250	2403-3260	2403-3270
<b>E-XPE</b>	2403-5210	2403-5220	2403-5230	2403-5240	2403-5250	2403-5260	2403-5270

<b>Thickness</b>	7	8	8.5	9	9.5	10	10.5
<b>Diameter</b>	26	29	32	35	38	41	44

Unit : mm



**Inset Patella**

	S	M	L	XL
<b>UHMWPE</b>	2401-1010	2401-1020	2401-1030	2401-1040
<b>XPE</b>	2403-3010	2403-3020	2403-3030	2403-3040
<b>E-XPE</b>	2403-5010	2403-5020	2403-5030	2403-5040

<b>Thickness</b>	8	10	10	10
<b>Diameter</b>	22	25	28	32

Unit : mm

# Order Information

Special Order Items

## Extensions (MBA)



**Augment**

	#1	#2	#3	#4	#5	#6
<b>5 mm</b>	2803-7011	2803-7021	2803-7031	2803-7041	2803-7051	2803-7061
<b>10 mm</b>	2803-7012	2803-7022	2803-7032	2803-7042	2803-7052	2803-7062



**Straight Stem**

Ø9 x 20 mm	Ø9 x 45 mm	Ø9 x 70 mm	Ø9 x 95 mm
2715-5109	2715-5209	2715-5309	2715-5409



**Press-fit Stem**

Ø12.5 x 45 mm	Ø14 x 45 mm
2715-7212	2715-7214



Please note that all United Orthopedic Corporation product brochures have been authored in the English language. Any translations into other languages have not been reviewed or approved by United Orthopedic Corporation and their accuracy cannot be confirmed. Any questions regarding United Orthopedic Corporation products should be directed to United Orthopedic Corporation at [unitedorthopedic.com/contact](http://unitedorthopedic.com/contact).

The CE mark is valid only if it is also printed on the product label.



Importiert & vertrieben in der Schweiz durch  
Importé & distribué en Suisse par  
Importato e distribuito in Svizzera da

 **PLUSORTHO**  
PROTHETIK

Aeschwahrstrasse 54 info.ch@plusortho.ch  
CH-4665 Oftringen tel +41(0)62 788 2010  
www.plusortho.ch fax +41(0)62 788 2011

