

# UTF™ Reduced Stem

Femoral Hip System



***UTF (United Tapered Fit) Reduced Stem –***

The dual taper wedge stem is designed for primary hip replacement surgery. The UTF reduced stem characterizes refined proximal M/L width to maximize metaphyseal fitting. A slim body and broach-only technique enables minimal bone removal.



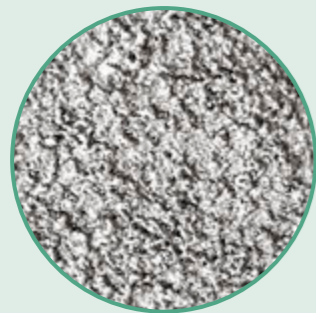


**Standard and High Offset**

- Designed to allow optimization of soft tissue tensioning and joint stability

**Dual Taper Design**

- The taper-fit concept is intended to engage the cortex in the stem corners to provide excellent fixation and superior axial and rotational stability



**Titanium Plasma Spray Coating**

- Designed to improve biological fixation

**12/14 Neck Taper**

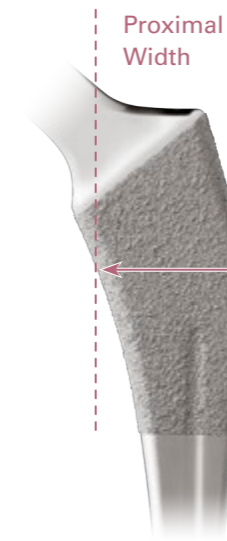
- Accommodate a complete selection of femoral heads

**Insertion Hole**

- Combined with quick connect holder for ease of use



Proximal Width



Stem Size	Proximal Width	Increment
#00	22.8	—
#0	23.6	0.8
#1	25.0	1.4
#2	26.5	1.5
#3	27.5	1.0
#4	28.5	1.0
#5	29.5	1.0
#6	30.5	1.0
#7	31.5	1.0
#8	32.5	1.0
#9	34.0	1.5
#10	35.5	1.5
#11	37.5	2.0
#12	39.5	2.0
#13	41.5	2.0
#14	43.5	2.0

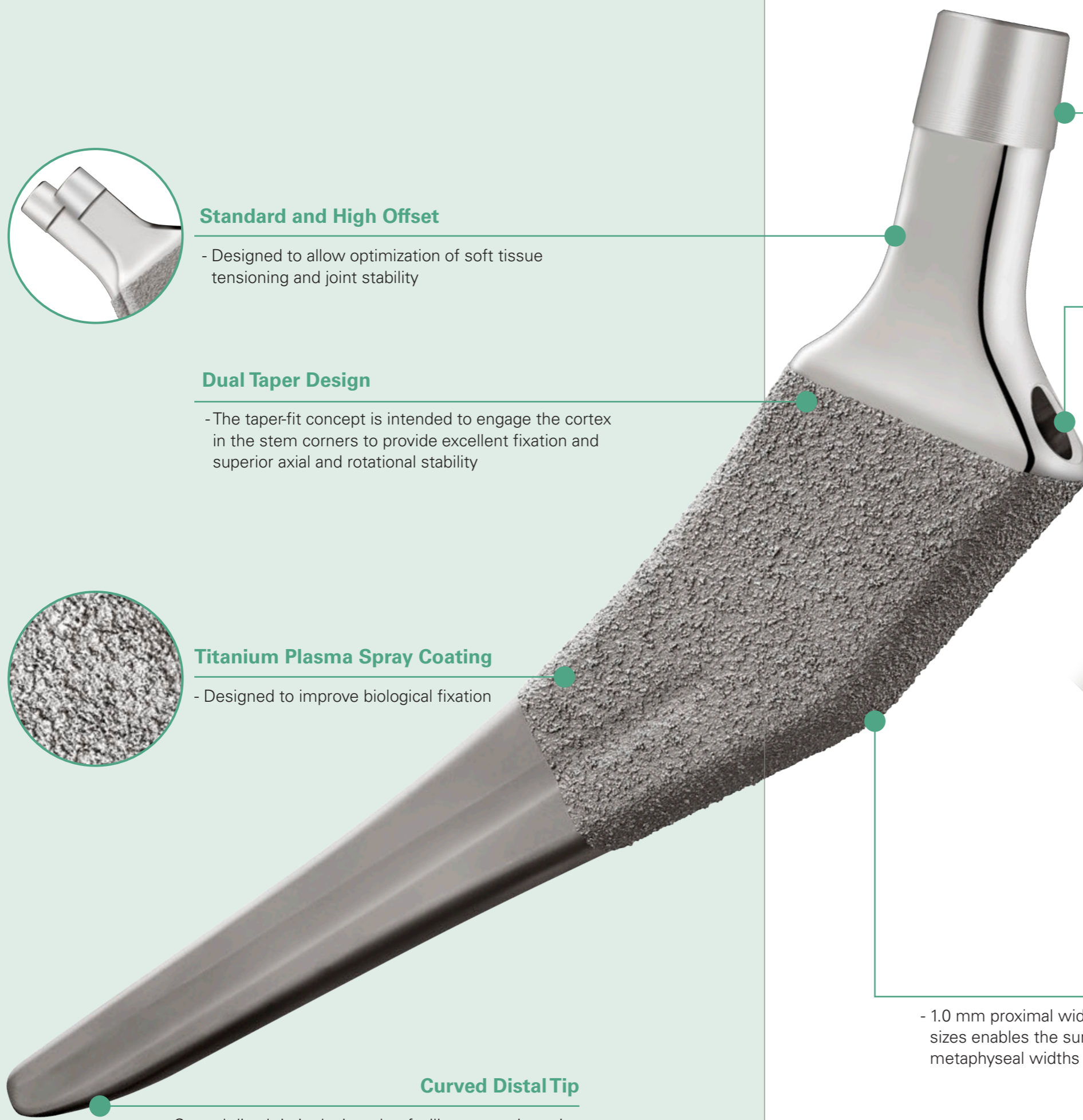
Unit:mm

**Refined Proximal Width**

- 1.0 mm proximal width increments between commonly used sizes enables the surgeon to optimize between different metaphyseal widths

**Curved Distal Tip**

- Curved distal tip is designed to facilitate stem insertion

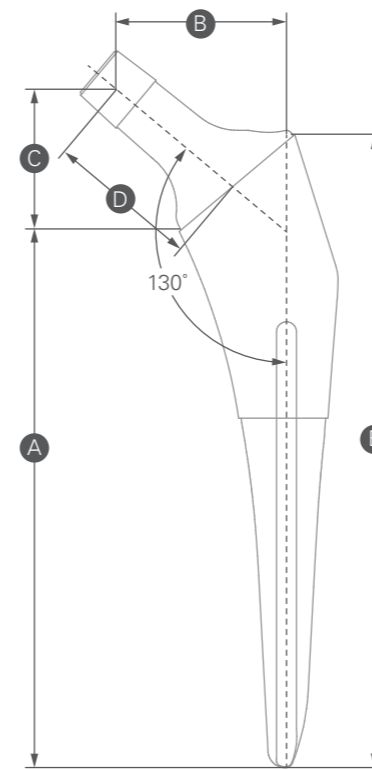


# Order Information

## Standard



Catalog Number	Description
1106 - 3099	# 00
1106 - 3000	# 0
1106 - 3001	# 1
1106 - 3002	# 2
1106 - 3003	# 3
1106 - 3004	# 4
1106 - 3005	# 5
1106 - 3006	# 6
1106 - 3007	# 7
1106 - 3008	# 8
1106 - 3009	# 9
1106 - 3010	# 10
1106 - 3011	# 11
1106 - 3012	# 12
1106 - 3013	# 13
1106 - 3014	# 14



## High Offset



Catalog Number	Description
1106 - 3200	# 0
1106 - 3201	# 1
1106 - 3202	# 2
1106 - 3203	# 3
1106 - 3204	# 4
1106 - 3205	# 5
1106 - 3206	# 6
1106 - 3207	# 7
1106 - 3208	# 8
1106 - 3209	# 9
1106 - 3210	# 10
1106 - 3211	# 11
1106 - 3212	# 12
1106 - 3213	# 13
1106 - 3214	# 14

Size	A Medial Length	B Offset	C Vertical Height	D Neck Length	E Lateral Length
<b>Standard</b>					
#00	95	32	25.9	28	114
#0	100	32	26.2	28	120
#1	105	32	26.5	28	125
#2	107	33	27.6	29	128
#3	110	34	28.4	30	131
#4	113	35	29.3	31	134
#5	116	36	30.1	32	137
#6	118	37	31.0	33	140
#7	120	38	31.8	34	142
#8	122	39	32.6	35	144
#9	123	39	32.7	35	146
#10	126	41	34.3	37	149
#11	128	42	35.1	38	152
#12	131	43	36.0	39	155
#13	133	44	36.7	39.5	158
#14	135	45	37.2	40	161
<b>High Offset</b>					
#0	100	38	26.3	32	120
#1	105	38	26.6	32	125
#2	107	39	27.6	33	128
#3	110	40	28.5	34	131
#4	113	41	29.3	35	134
#5	116	43	30.1	37	137
#6	118	44	31.0	38	140
#7	120	45	31.8	39	142
#8	122	46	32.6	40	144
#9	123	47	32.7	40	146
#10	126	49	34.3	42	149
#11	128	50	35.1	43	152
#12	131	51	36.0	44	155
#13	133	52	36.7	45	158
#14	135	53	37.2	45.5	161

Please note that all United Orthopedic Corporation product brochures have been authored in the English language. Any translations into other languages have not been reviewed or approved by United Orthopedic Corporation and their accuracy cannot be confirmed. Any questions regarding United Orthopedic Corporation products should be directed to United Orthopedic Corporation at [unitedorthopedic.com/contact](http://unitedorthopedic.com/contact).

The CE mark is valid only if it is also printed on the product label.



importiert & vertrieben in der Schweiz durch  
Importé & distribué en Suisse par  
Importato e distribuito in Svizzera da

The logo for Plusortho Prothetik, featuring a stylized red 'P' followed by the text 'PLUSORTHO PROTHETIK' in a bold, sans-serif font.

Aeschwahrstrasse 54 info.ch@plusortho.ch  
CH-4665 Oftringen tel +41(0)62 788 2010  
www.plusortho.ch fax +41(0)62 788 2011

A square QR code located in the bottom right corner of the Plusortho contact information box.